

Plant & Animal Cells Final Exam

1. A gel like substance inside a cell
a. cell membrane b. chromosome c. tissue engineering d. cytoplasm e. chloroplast
2. A technique that grows patches of skin tissue to replace burnt or damaged skin
a. cell membrane b. chromosome c. tissue engineering d. cytoplasm e. chloroplast
3. structure inside of cell nuclei that contains DNA and determines what kinds of traits an organism will have
a. cell membrane b. chromosome c. tissue engineering d. cytoplasm e. chloroplast
4. green organelle in a cell that traps the energy from sunlight and turns it into food.
a. cell membrane b. chromosome c. tissue engineering d. cytoplasm e. chloroplast
5. the flexible layer that forms the boundary between a cell and its environment
a. cell membrane b. chromosome c. tissue engineering d. cytoplasm e. chloroplast
6. Photosynthesis occurs in ____
a. plant cells b. cell membrane c. animal cells d. all of these
7. All living things are made of ____
a. organ systems b. organs c. cells d. tissue
8. Which of the following cell parts is a storage place for water, food and minerals
a. membrane b. vacuole c. nucleus d. mitochondria
9. Process through which green plants trap energy from sunlight and turn into food
a. photosynthesis b. organ c. nucleus d. tissue e. organ system
10. a group of similar cells that all do the same sort of work
a. photosynthesis b. organ c. nucleus d. tissue e. organ system
11. a structure made up of 2 or more different types of tissue that work together
a. photosynthesis b. organ c. nucleus d. tissue e. organ system
12. part of the cell that controls most of a cell's activities
a. photosynthesis b. organ c. nucleus d. tissue e. organ system
13. a group of organs that work together to do a certain job
a. photosynthesis b. organ c. nucleus d. tissue e. organ system
14. In what cell part is energy released?
a. nucleus b. cytoplasm c. mitochondria d. cell wall e. membranes
15. cellular respiration takes place in:
a. mitochondria b. membranes c. nucleus d. cytoplasm e. cell wall
16. Controls most of the cell's activities:
a. chromosomes b. cell membrane c. nucleus d. mitochondria e. vacuoles

17. Stores food, water, and wastes

a. chromosomes b. cell membrane c. nucleus d. mitochondria e. vacuoles

18. controls what enters and exits the cell

a. chromosomes b. cell membrane c. nucleus d. mitochondria e. vacuoles

19. releases energy for the cell

a. chromosomes b. cell membrane c. nucleus d. mitochondria e. vacuoles

20-23: Label these from the lowest level of cell organization (1) to the highest level of organization (4):

a. lowest level of cell organization (1)

c. 1 step below highest (3)

b. 1 step above lowest level of cell organization(2)

d. highest level of cell organization (4)

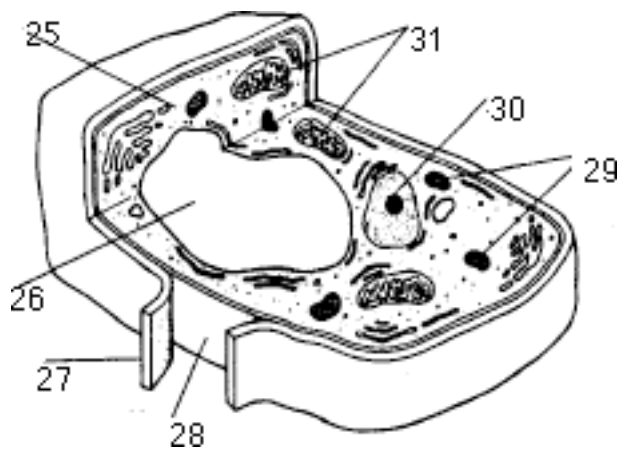
20. cell

21. organ

22. tissue

23. organ system

24-31: Use the drawing below, and Identify the cell and it's parts



24. The entire cell is a: a. cell membrane b. plant cell c. cell wall d. animal cell e. cytoplasm

25. Item 25: a. cell membrane b. chloroplast c. vacuole d. mitochondria e. cytoplasm

26. Item 26: a. cell membrane b. chloroplast c. vacuole d. mitochondria e. cytoplasm

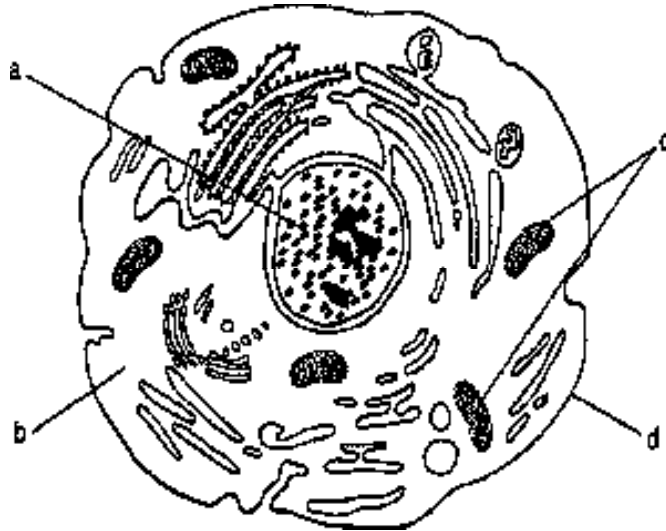
27. Item 27: a. cell membrane b. chloroplast c. cell wall d. mitochondria e. cytoplasm

28. Item 28: a. cell membrane b. chloroplast c. cell wall d. mitochondria e. cytoplasm

29. Item 29: a. vacuoles b. cell membrane c. chloroplast d. nucleus e. mitochondria

30. Item 30: a. vacuoles b. cell membrane c. chloroplast d. nucleus e. mitochondria

31. Item 31: a. vacuoles b. cell membrane c. chloroplast d. nucleus e. mitochondria



32. Which structure in the above figure regulates material coming in and going out of the cell? a. a b. b c. c d. d
33. What substance in the figure above makes up the majority of the cell? a. a b. b c. c d. d
34. Which structure in the figure above is the command center of the cell? a. a b. b c. c d. d
35. Which structure in the figure above supplies the cell with energy? a. a b. b c. c d. d
36. What kind of cell is the figure above? a. plant b. animal c. neither of these
37. Which structure in the above figure is a?
a. cytoplasm b. mitochondria c. nucleus d. cell wall e. cell membrane
38. Which structure in the above figure is b?
a. cytoplasm b. mitochondria c. nucleus d. cell wall e. cell membrane
39. Which structure in the above figure is c?
a. cytoplasm b. mitochondria c. nucleus d. cell wall e. cell membrane
40. Which structure in the above figure is d?
a. cytoplasm b. mitochondria c. nucleus d. cell wall e. cell membrane
41. Which of the following cells might be an animal cell?
a. a cell with a nucleus, chloroplasts, mitochondria, cytoplasm
b. a cell with a cell membrane, a cell wall, mitochondria, cytoplasm
c. a cell with a cell membrane, a nucleus, mitochondria, cytoplasm
d. a cell with a nucleus, a cell wall, mitochondria, cytoplasm
42. Which of the following cell parts is a storage place for water, food and minerals?
a. membrane b. vacuole c. nucleus d. mitochondria e. chromosomes
43. Living things that are made up of more than one cell are called:
a. organ systems b. many celled organisms c. bacteria d. single celled organisms e. tissues
44. what part of a cell helps control what exits and enter a plant cell or an animal cell?
a. vacuole b. mitochondria c. chloroplasts d. cell membrane e. cell wall

45. Which of the following is only found in plant cells?

- a. endoplasmic reticulum b. mitochondria c. cell membrane d. chloroplasts

46. Organelles are___: a. parts of organs b. groups of cells c. specialized parts of cells

- d. your teacher's children e. none of these things

Use the drawings below to answer questions 47-53:

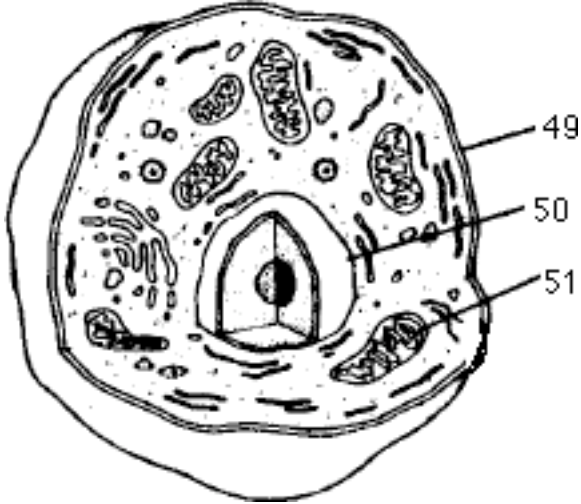


Figure A

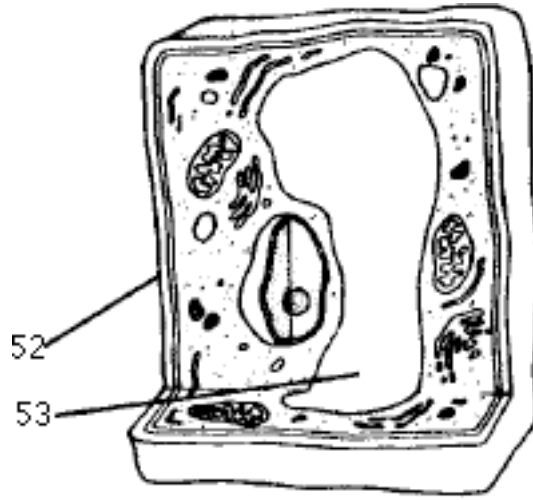


Figure B

47. Figure A is a (an): a) plant cell b) animal cell c) neither of these d) both of these

48. Figure B is a (an): a) plant cell b) animal cell c) neither of these d) both of these

For questions 49- 53: Label the drawing parts: 49. ___ 50. ___ 51. ___ 52. ___ 53. ___

- a) cell wall b) nucleus c) vacuole d) mitochondria e) cell membrane

54. Which cells are **not** plant cells?

- a) root b) leaves c) skin d) stem e) all of these are plant cells

55. Which of these cells are **not** animal cells?

- a) muscle b) stem c) nerve d) blood e) all of these are animal cells