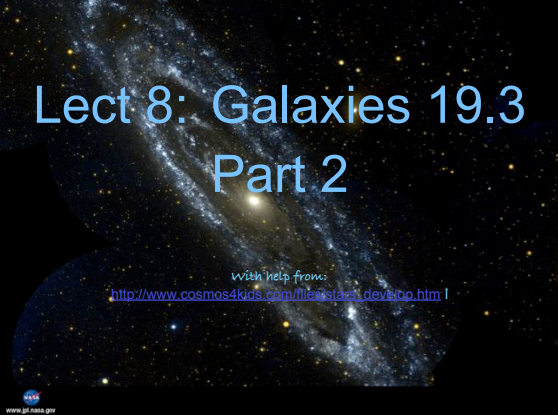


# Lect 8: Galaxies 19.3 Part 2

With help from:  
[http://www.cosmos4kids.com/files/taas\\_dev/lbp.htm](http://www.cosmos4kids.com/files/taas_dev/lbp.htm)



www.gsfc.nasa.gov

About 1,500 galaxies are visible in this deep view of the universe, taken by allowing the Hubble Space Telescope to stare at the same tiny patch of sky for 10 consecutive days in 1995. The image covers an area of sky only about width of a dime viewed from 75 feet away.



The Hubble Deep Field North HUBBLESTITE.org

The small, blue galaxy visible in the upper left corner of the Tadpole ripped through the larger spiral galaxy, distorting it and pulling out a long tail of stars, gas and dust. Young blue star clusters, spawned by the collision, are evident in the tail and spiral arms.



The Tadpole Galaxy — UGC 10114 HUBBLESTITE.org

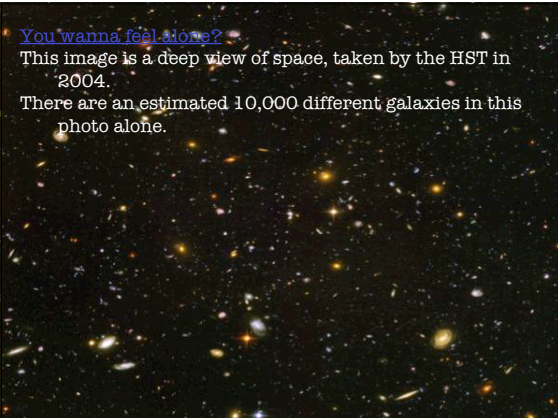


The Southern Ring Nebula — NGC 3132 HUBBLESTITE.org

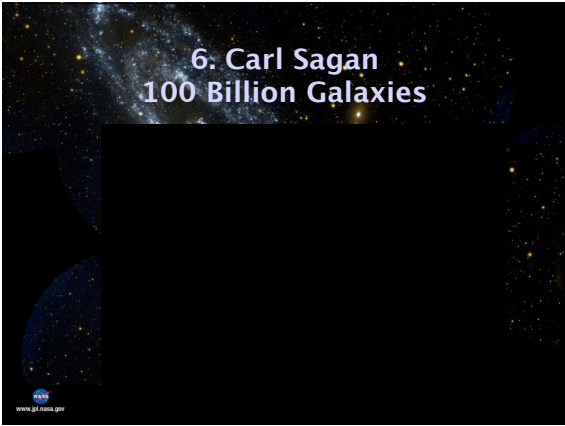


Core of Galaxy NGC 4314 HUBBLESTITE.org

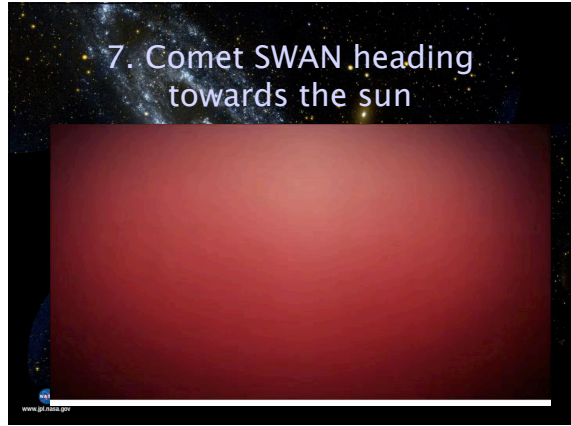
[You wanna feel alone?](#)  
 This image is a deep view of space, taken by the HST in 2004. There are an estimated 10,000 different galaxies in this photo alone.



6. Carl Sagan  
100 Billion Galaxies



7. Comet SWAN heading  
towards the sun



8. Auroras Underfoot

